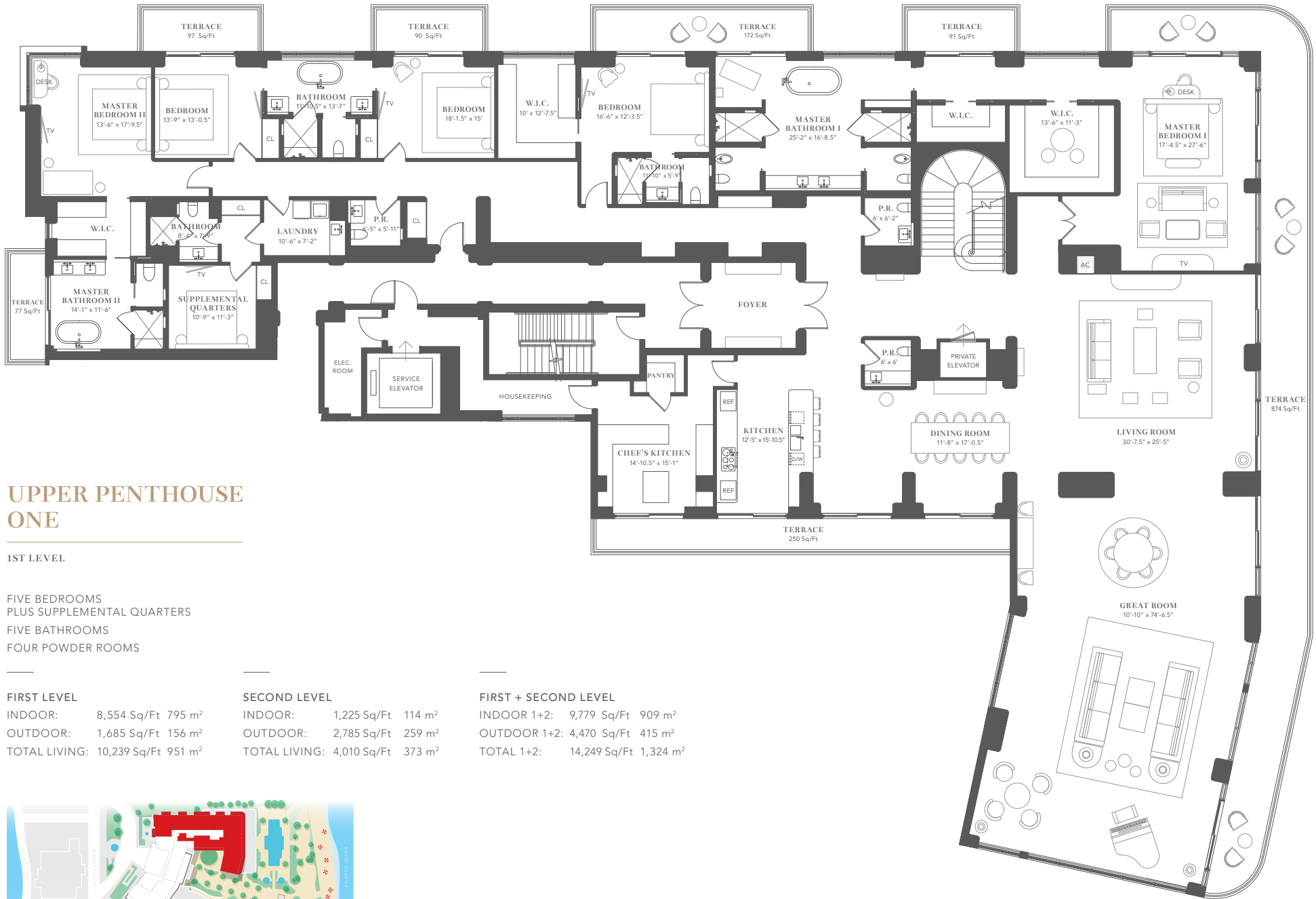


THE RESIDENCES  
**FAENA HOTEL**

MIAMI BEACH

14TH FLOOR



## UPPER PENTHOUSE ONE

### 1ST LEVEL

FIVE BEDROOMS  
PLUS SUPPLEMENTAL QUARTERS  
FIVE BATHROOMS  
FOUR POWDER ROOMS

#### FIRST LEVEL

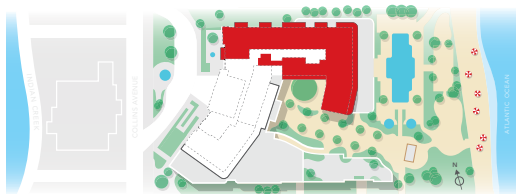
INDOOR: 8,554 Sq/Ft 795 m<sup>2</sup>  
OUTDOOR: 1,685 Sq/Ft 156 m<sup>2</sup>  
TOTAL LIVING: 10,239 Sq/Ft 951 m<sup>2</sup>

#### SECOND LEVEL

INDOOR: 1,225 Sq/Ft 114 m<sup>2</sup>  
OUTDOOR: 2,785 Sq/Ft 259 m<sup>2</sup>  
TOTAL LIVING: 4,010 Sq/Ft 373 m<sup>2</sup>

#### FIRST + SECOND LEVEL

INDOOR 1+2: 9,779 Sq/Ft 909 m<sup>2</sup>  
OUTDOOR 1+2: 4,470 Sq/Ft 415 m<sup>2</sup>  
TOTAL 1+2: 14,249 Sq/Ft 1,324 m<sup>2</sup>



# UPPER PENTHOUSE ONE

2ND LEVEL

## FIRST LEVEL

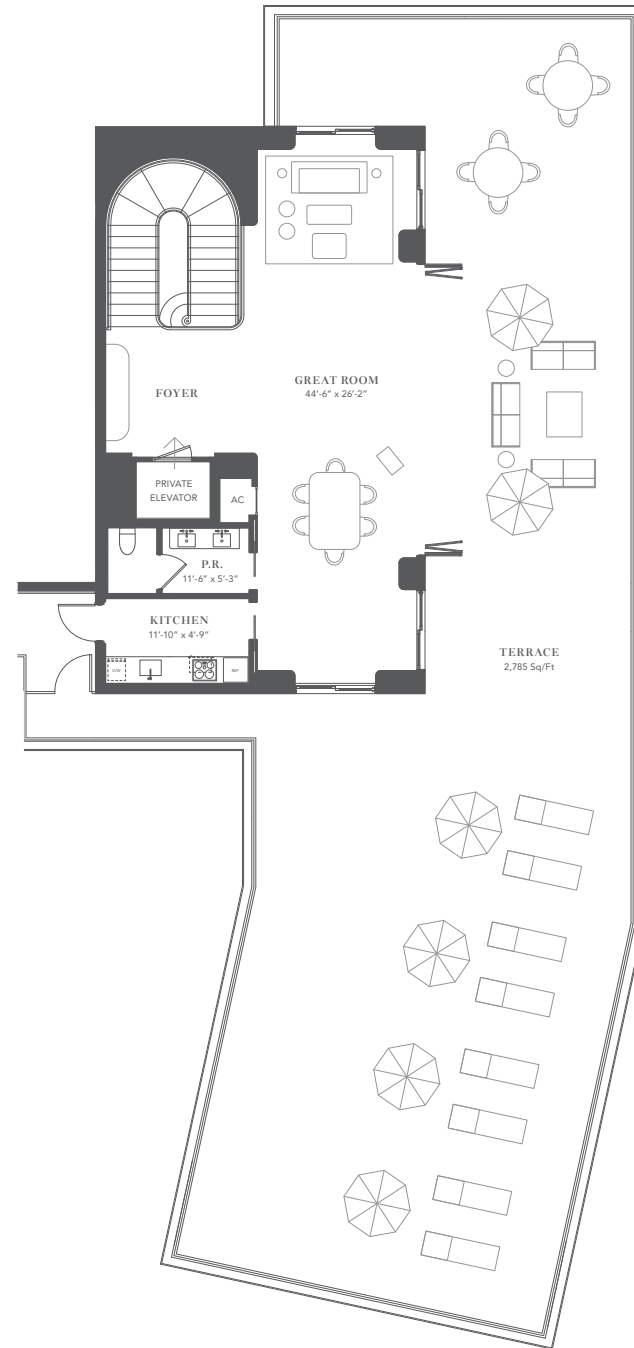
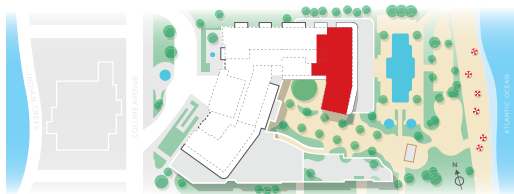
INDOOR:	8,554 Sq/Ft	795 m <sup>2</sup>
OUTDOOR:	1,685 Sq/Ft	156 m <sup>2</sup>
TOTAL LIVING:	10,239 Sq/Ft	951 m <sup>2</sup>

## SECOND LEVEL

INDOOR:	1,225 Sq/Ft	114 m <sup>2</sup>
OUTDOOR:	2,785 Sq/Ft	259 m <sup>2</sup>
TOTAL LIVING:	4,010 Sq/Ft	373 m <sup>2</sup>

## FIRST + SECOND LEVEL

INDOOR 1+2:	9,779 Sq/Ft	909 m <sup>2</sup>
OUTDOOR 1+2:	4,470 Sq/Ft	415 m <sup>2</sup>
TOTAL 1+2:	14,249 Sq/Ft	1,324 m <sup>2</sup>

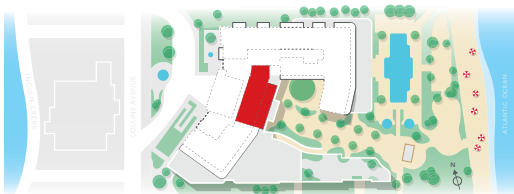
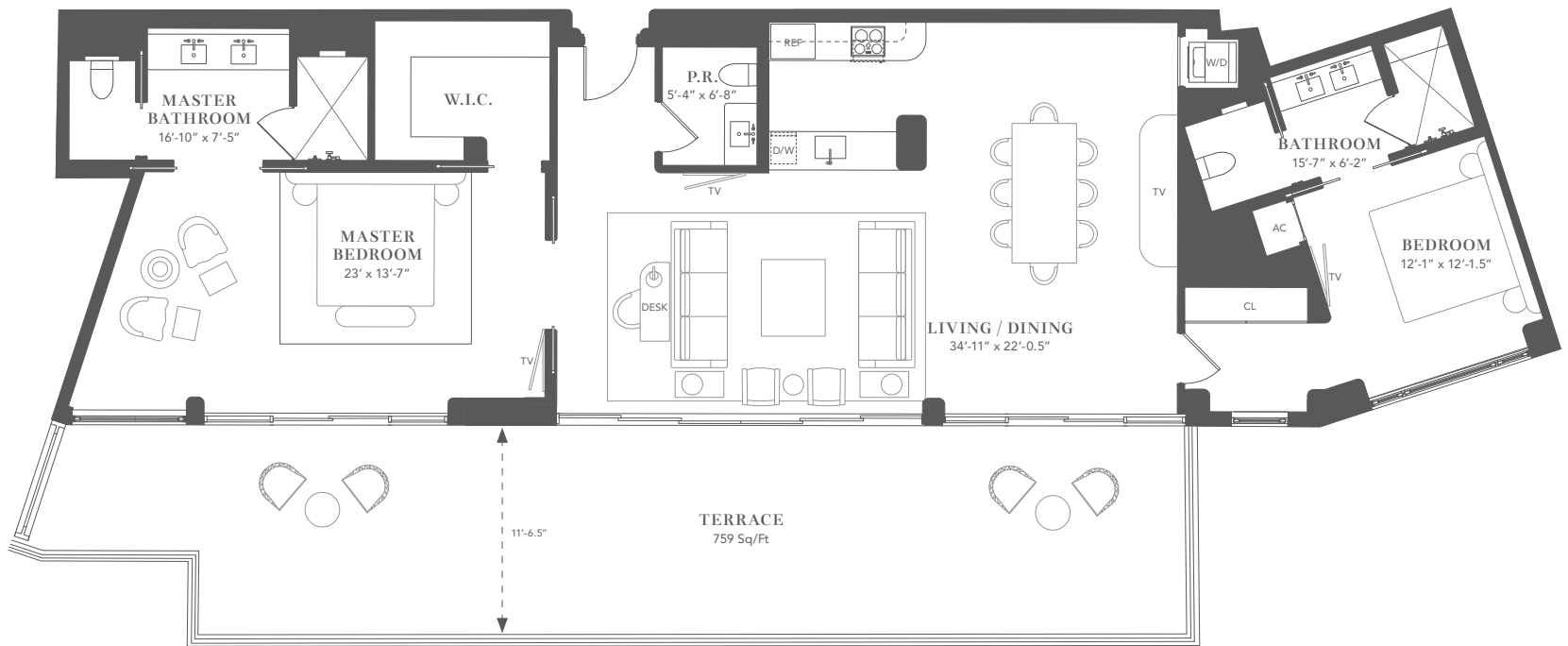


# UPPER PENTHOUSE TWO



TWO BEDROOMS  
TWO BATHROOMS  
ONE POWDER ROOM

INDOOR: 1,878 Sq/Ft 174 m<sup>2</sup>  
OUTDOOR: 759 Sq/Ft 71 m<sup>2</sup>  
TOTAL LIVING: 2,637 Sq/Ft 245 m<sup>2</sup>

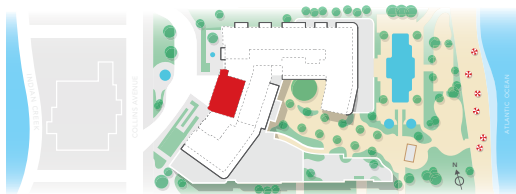
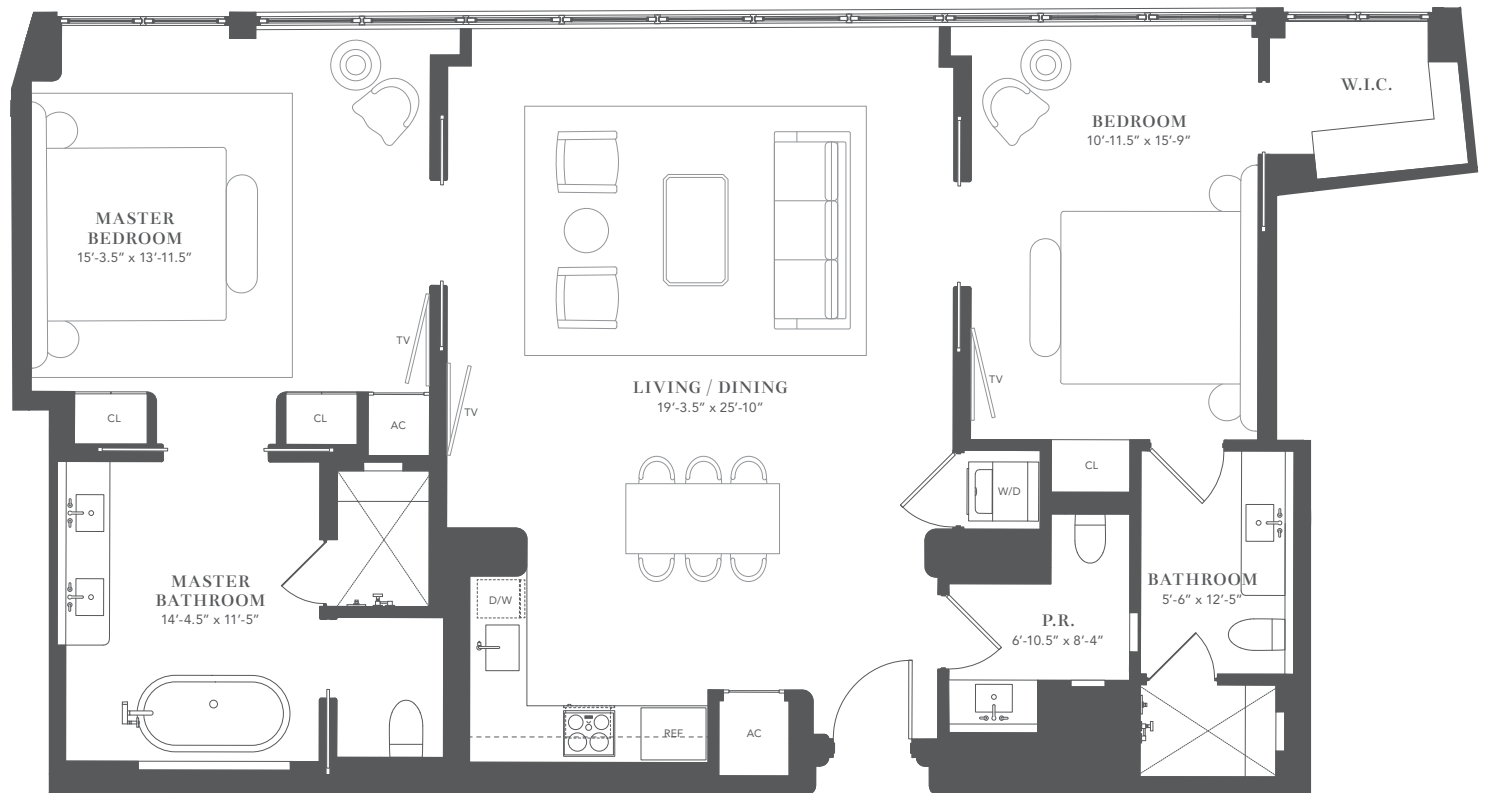


# UPPER PENTHOUSE FOUR



TWO BEDROOMS  
TWO BATHROOMS  
ONE POWDER ROOM

TOTAL LIVING: 1,508 Sq/Ft 140 m<sup>2</sup>



**THE RESIDENCES AT  
FAENA HOTEL MIAMI BEACH**

3201 Collins Avenue, Miami Beach FL 33140

[www.faena.com](http://www.faena.com)



This is not an offer to sell, or solicitation of offers to buy, the condominium units in states where such offer or solicitation cannot be made. This offering is made only by the offering documents for the condominium and no statement should be relied upon if not made in the offering documents. Stated dimensions are measured to the exterior boundaries of the exterior walls and the centerline of interior demising walls and in fact vary from the dimensions that would be determined by using the description and definition of the "Unit" set forth in the Declaration (which generally only includes the interior airspace between the perimeter walls and excludes interior structural components). Note that measurements of rooms set forth on this floor plan are generally taken at the greatest points of each given room (as if the room were a perfect rectangle), without regard for any cutouts. Accordingly, the area of the actual room will typically be smaller than the product obtained by multiplying the stated length times width. All dimensions are approximate and may vary with actual construction, and all floor plans and development plans are subject to change.